

A: ELLA. Style: CZ0999.

Description: girls cross over knit cardigan.

Colors: light pink, pastel blue, black.

Sizes: CHS, CHM, CHL.

Fabric: 100% acrylic cashmere like yarn.

B: PAULA. Style: CW0982.

Description: girls knee length leg warmer with ribbed cuff.

Colors: light pink, pastel blue, black.

Sizes: one size – 18”.

Fabric: 100% acrylic cashmere like yarn.



CW0973



MOYA. Style: CW0973.

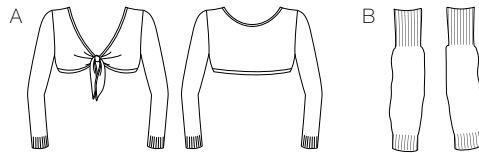
Description: girls 2 x 2 rib knee length leg warmer.

Colors: light pink, pastel blue, black.

Sizes: one size – 18.5".

Fabric: 100% acrylic cashmere like yarn.





A: HAZEL. Style: CZ0989.

Description: girls crop tie front top.
Colors: light pink, pastel blue, black.

Sizes: CHS, CHM, CHL.

Fabric: 100% acrylic cashmere like yarn.

B: PAULA. Style: CW0982.

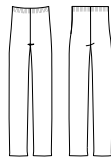
Description: girls knee length leg warmer with ribbed cuff.
Colors: light pink, pastel blue, black.

Sizes: one size – 18".

Fabric: 100% acrylic cashmere like yarn.



CP0938



ROSIE. Style: CP0938.

Description: girls roll over waist pants.

Colors: light pink, pastel blue, black.

Sizes: CHS, CHM, CHL.

Fabric: 100% acrylic cashmere like yarn.

